

---

CONNECTICUT STATE MUSEUM OF NATURAL HISTORY &  
CONNECTICUT ARCHAEOLOGY CENTER

---

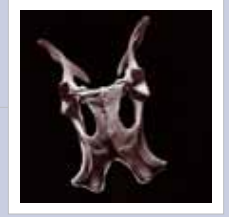
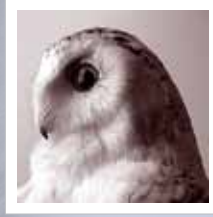


---

2004 ANNUAL REPORT

## Board of Directors

William Morlock, Interim Chairman  
Carmen Cid, Biology, Eastern CT State University  
Jean Crespi, Geology, UConn  
Steve Fish, CT DEP  
Carl Lindquist, M.D.  
Natalie Munro, Anthropology, UConn  
Karin Peterson, CT Historical Commission  
David Schroeder, Natural Resources, UConn  
Eric Schultz, Biology, UConn  
Sandra Vlock, AKV Architects  
David Wagner, Biology, UConn  
Steven Weinberg, Dept of Education



The Connecticut State Museum of Natural History and Connecticut Archaeology Center serve the University of Connecticut and the public by promoting an understanding and appreciation of our natural and cultural world, especially as related to New England.

## Staff

Nicholas F. Bellantoni, Connecticut State Archaeologist  
Susan Broneill, Museum Receptionist (part-time)  
Cheri Collins, Program Coordinator & Collection Manager  
Carol Davidge, Public Information Coordinator (part-time)  
Collin Harty, Exhibit & Communication Design  
Leanne Kennedy Harty, Director  
Ann Merritt, Membership Coordinator (part-time)  
Carl Rettenmeyer, Founding Director Emeritus

## Work Study/Student Staff

Traci Abraham  
Luci Fernandez  
Sophia Gintoff  
Jaime Grant  
Jaclyn Nadeau  
Maitri Thaker  
Sheryl Scruggs

Within the mission, the Museum's fundamental goals are to acquire and preserve collections and to use collections, exhibits, and programs:

- To cultivate an interest about natural history among the citizens of Connecticut.
- To communicate the significance and vulnerability of archaeological and natural resources.
- To enhance university learning, teaching, and research.
- To enrich elementary and secondary education.
- To acquire and present knowledge about the natural and cultural history of Connecticut and New England.
- To showcase the academic resources of the University of Connecticut and provide a public connection to them.



Dear Friends,

This has truly been an historic year for the Museum of Natural History and the Office of State Archaeology. In January, we began the exciting first phase of our Museum transformation by establishing the new Connecticut Archaeology Center. In this unique undertaking, we will renovate our under-utilized building to create classrooms, library, laboratory, exhibits and collections facilities in a prime location on campus. The new Center will concentrate the strengths of the Museum of Natural History and the Office of State Archaeology to create an active environment for education and research while expanding our programs and other services. Strong UConn leadership and our motivated staff have been joined by enthusiastic supporters across the state to ensure the success of this new undertaking.

Renovation will not be completed until 2005, but we are already creating new learning opportunities for people of all ages. Many new lectures, workshops, day trips, camps and classes are now available to children and adults, along with Museum family "classics". UConn undergraduate and graduate students are becoming involved in new academic endeavors. A collaborative effort began digitization of more than 5,000 site files of Connecticut archaeological sites using new technology and the expertise of our geography and anthropology departments. Members of the Neag School of Education Student Association (NSESAs) are assisting staff by providing fun, thematic activities for children in our exhibit area each month. In the next school year, Connecticut teachers will benefit from high-quality training and resources provided by the Center for elementary and secondary school classrooms.

Soon the Museum and Archaeology Center will become the first permanent home for the state's world-class anthropological collections – well over 600,000 artifacts, with many rare and one-of-a-kind artifacts. As we become a valuable new destination point on campus, families, individuals and groups will be exposed to information and objects formerly unavailable to the public, and they will have regular opportunities to meet and learn from experts. Exhibits will allow for discovery, guided learning, and hands-on enjoyment for all. We invite you to share the excitement of our renovation and expansion now, and to look ahead with us to a large-scale Museum construction project scheduled later in the UConn 21st Century funding program.

A handwritten signature in black ink that reads "Leanne Harty". The signature is written in a cursive, flowing style.

Leanne Kennedy Harty  
Director



## ACTIVITY

## HIGHLIGHTS

This year we successfully launched the Museum of Natural History's new Connecticut Archaeology Center at UConn. With wonderful energy and enthusiasm, board and staff members worked with university leadership to accomplish the important goals we had established for this period. In early January, a letter from Provost John Petersen was sent to members, donors and friends of the Museum, along with an advance copy of press information. People across the state responded to the announcement with enthusiasm and exceptionally favorable media and public attention.

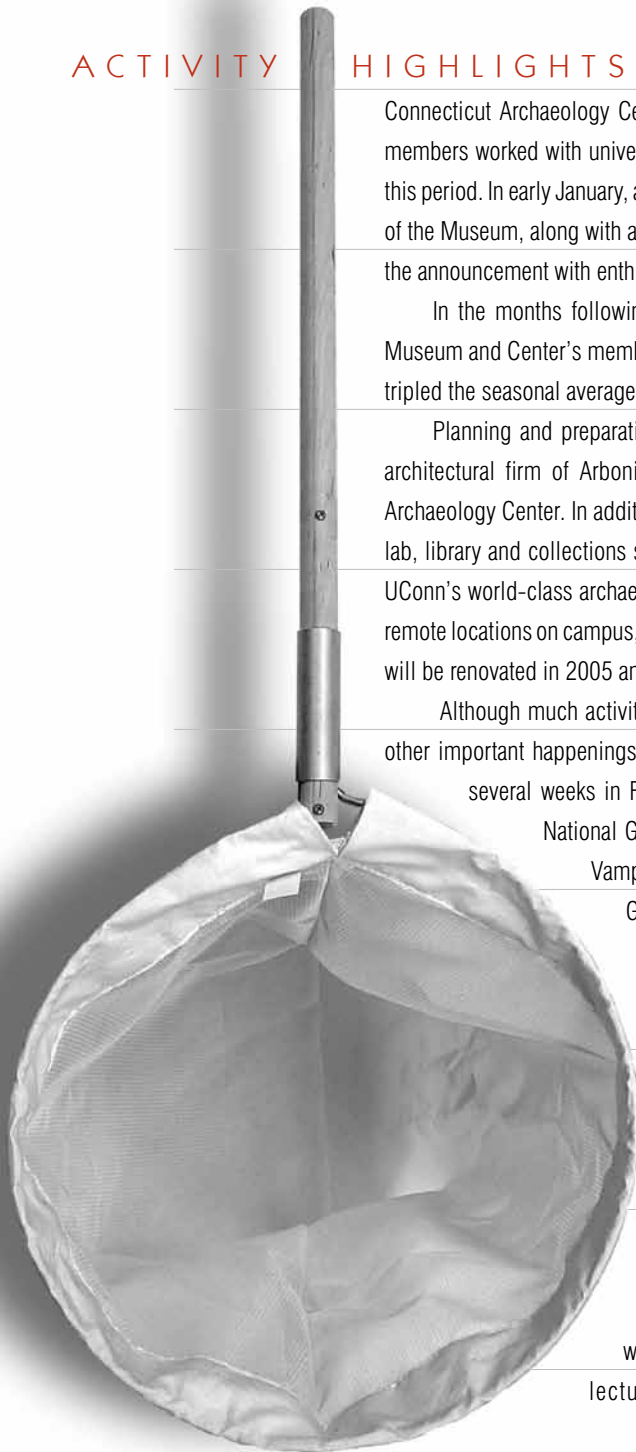
In the months following the announcement, a very strong positive response was seen in the Museum and Center's membership, donations and program attendance. New memberships more than tripled the seasonal average, and the renewal rate for existing members increased by nearly 20%.

Planning and preparation for facility renovation and expansion was ongoing. Working with the architectural firm of Arbonies, King and Vlock, we defined design needs for the Museum's new Archaeology Center. In addition to classrooms and a public exhibit area, we will create an archaeology lab, library and collections storage facility. The new facility will provide the first permanent home for UConn's world-class archaeological collections. Currently more than 600,000 artifacts are housed in remote locations on campus, primarily at the Dodd Center. The second floor of the Hillside Road building will be renovated in 2005 and a collections space added to the back of the Museum building.

Although much activity focused on the Museum's organizational changes this year, there were other important happenings as well. The Office of State Archaeology was the center of attention for several weeks in February as Brighton Films, a videography team from England, filmed a National Geographic documentary about discovery and research into New England Vampire folk beliefs. The one-hour program, which will air on the National Geographic channel in the United States in 2005, was one of the many highlights at the Museum this year.

## PROGRAMS, OUTREACH & EXHIBITS

More and more, our programs and activities are becoming a vehicle for the public to understand and appreciate the important research and discoveries being made at UConn and across the region. The Museum and Archaeology Center's classroom and field learning activities included programs presented by numerous UConn faculty, graduate students and alumni. This year a total of 76 programs were presented, serving approximately 60,000 people in workshops, lectures, trips, camps and outreach activities.



A unique course in Underwater Archaeology at UConn's Avery Point Campus was offered in cooperation with the Office of State Archaeology, the Office of Historic Preservation, Mystic Seaport Museum, and the Maritime Archaeological and Historical Society this spring. The four days of workshops were filled to capacity.



Program Coordinator and Collection Manager Cheri Collins developed two new curricula for events and outreach this year. Working with Fibers explores the use of plant and animal fibers worldwide and through time. Zooarchaeology in your Backyard is a new twist on a standard approach to "shoebox" archaeology curriculum. Students from the NEAG Student association continued their important involvement in program implementation at the Museum and Center this year, providing drop-in activities in the Museum's exhibit space for First Sundays for Kids throughout the year. The collaboration will continue next year.

In a large-scale, hands-on extension of the "In your backyard" themes, a full-fledged managed dig was developed for the summer months here at our Storrs campus. In the popular Museum and Archaeology Center summer camps this year, participants learned archaeological field techniques and worked the dig over approximately six weeks. Robert Gradie, an archaeologist who did preliminary work on the Horsebarn Hill site, assisted Cheri Collins in leading the sessions that included units for both primary and secondary school students. Approval and support was received from the State Historic Preservation Office and the College of Agriculture and Natural Resources that oversees the property.



The Museum and Archaeology Center participated as an exhibitor at the Connecticut Flower and Garden Show at the Expo Center in Hartford this year. The Museum's exhibit, Ethnobotany, won a silver and blue ribbon, which is an award in recognition of education. Approximately 30,000 people attended the show.



Also at the Expo Center, members of the Friends of the Office of State Archaeology (FOSA) staffed a booth at the CPTV Family Science Expo. As the volunteers discussed the new Archaeology Center and program offerings with children and families, they also provided information about important preservation projects across the state. Approximately 20,000 people attended the event.

The Museum worked closely with Suzanne Zack, the Publicity Marketing Manager of Babbidge Library, and Jane Recchio, University Library Assistant, to develop an exhibit featuring some of the Allen Collection bird mounts as a part of the Library's successful Birds of a Feather ornithological exhibit this Spring. Cheri Collins was acknowledged as the Curator of the exhibit that hosted hundreds of visitors to the Storrs campus.



The exhibit Biodiversity: In Our Backyards was very well received at the Science Epicenter (formerly the Science Center of Eastern Connecticut) this year. Rented by the facility for four months, it was utilized by hundreds of school children, families and adult visitors, and integrated in regular public programming.

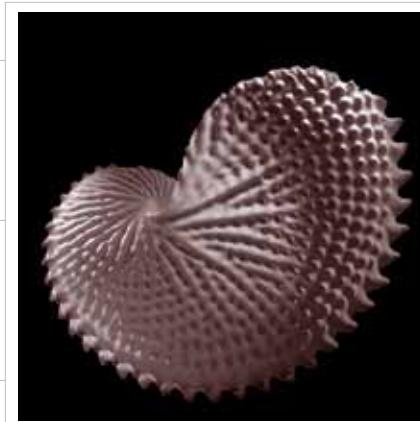


## The Office of State Archaeology

was contracted by the National Park Service and Appalachian Trail Conference to conduct a cultural resource assessment of the 51-mile Appalachian Trail corridor through Connecticut. The project included documentary research, evaluation of condition and significance, and recommendations for management approaches to preserve these cultural resources into the 21st century. Over 400 archaeological sites were identified and recorded by GPS locations, put into a GIS database and mapped. The project is being used as a model for cultural resource assessments for other states along the Appalachian Trail corridor. The Office will be advising Massachusetts in developing a similar survey. In April, Nick Bellantoni presented a session on the project at the Society for American Archaeology's annual meeting in Montreal.



Developments at the CSMNH received very favorable recognition across the regional Museum community as well. In fact, Museum Director Leanne Harty was asked to give presentations at both the New England Museum Association (NEMA) annual meeting and the Professional Affinity Group workshop series this year to share information about the year's developments and describe the unique plans for the future.



Dr. Nick Bellantoni had three Independent Study students this year, focusing on underwater archaeology and local burial sites. Bellantoni participated in five student Graduate Committees, and fulfilled mentorship responsibilities for four Connecticut high school and college students. Leanne Harty joined Dr. Tom Bruhn, Curator of the Benton Museum of Art, and Tom Wilsted, Director of the Dodd Center, in leading a new First Year Experience class in the Fall semester. Through the Back Door: Exploring the Archives and Museums of UConn was well received and will continue to be offered.

The Museum has been working with a student from the College of Agriculture and Natural Resources on a project to investigate the use of goats as an invasive plant species abatement method. Cheri Collins has provided the goats and property, and is working as plant identification consultant for the project.

Ten students from the Department of Ecology and Evolutionary Biology received student research, teaching, or recognition awards through the Museum of Natural History this year. The funds provided important assistance for graduate student travel and research, and also recognized the efforts of an outstanding Teaching Assistant and undergraduate student in the department.



## TECHNICAL ASSISTANCE & STATE PRESERVATION EFFORTS

The Office of State Archaeology conducted over 300 reviews of economic development projects, and performed 235 field reviews and meetings in Connecticut municipalities. The State Archaeologist reviews construction projects across the state utilizing over 5,000 paper site files in the Office to assess and make recommendations on each.

With the help of the Departments of Geography and Anthropology, graduate students, the State Historic Preservation Office, and the Friends of the Office of State Archaeology, the Museum and Center began a project to digitize the paper site files and maps. Computerized information will help expedite retrieval and generation of data, create maps, update files as new sites become known, and do predictive modeling using statistical correlations of environmental and cultural data. Assessments often lead to reviews and negotiations related to archaeological site preservation. Bellantoni led a total of 42 archaeological excavations as a result of assessments in Connecticut this year.

In April, a new vehicle was purchased for official use by the State Archaeologist. The 1993 Ford Escort under longstanding rental agreement with the UConn motor pool had irreparable problems and was not to be replaced. The purchased vehicle, a 2004 Chevrolet S-10 truck, is safer and more appropriate for the State Archaeologist's activities. Payments on the four-year loan are nearly equivalent to the prior monthly rental fees for the Escort.

### PROFESSIONAL APPOINTMENTS

**Bellantoni, N.F.**

*Ex-officio member, Connecticut Commission on Culture & Tourism*

*Member, Connecticut Historic Preservation Council*

*Member, Connecticut History Committee*

### PUBLISHED

*Bellantoni, Nicholas F., Lithic Artifact Analysis and Bio-Archaeological Analysis of a Possible Adena Burial Site (CT84-51) in Milford, Connecticut. Bulletin of the Archaeological Society of Connecticut, No. 24, 2004 (with Jaclyn Nadeau)*

### IN PRESS

*Bellantoni, N.F., Native American Archaeology in Connecticut: 11,000 Years of Cultural Adaptation and Survival.*

*IN: Archaeological Sites and the National Register of Historic Places in Connecticut. Edited by David A. Poirier, and, Bruce Collette.*

### PRESENTATIONS

*Bellantoni, Nicholas F., Cultural Resource Assessment Study of the Appalachian Trail Corridor in Connecticut, Presented at the Annual Meeting of the Society for American Archaeology, Montreal, CA*

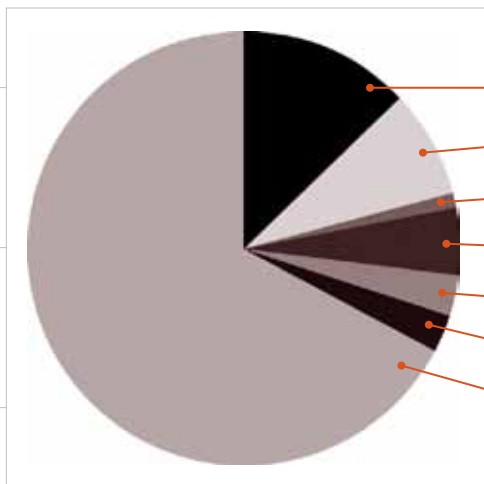
# FINANCIAL SUMMARY <sup>1</sup>

FOR THE YEAR ENDING JUNE 30, 2004

	Operating Funds	Endowment Principle	Building Fund	All Funds FY 2004
<b>REVENUE</b>				
Donations	\$26,080		\$36,586	\$62,666
Membership	\$22,456			\$22,456
Grants	\$3,958			\$3,958
Investment Income	\$37,546			\$37,546
UConn State Match	\$-			\$-
Programs, Fees, etc.	\$12,029			\$12,029
OSA Support	\$15,000			\$15,000
Rental Income	\$2,780			\$2,780
Allotment from UConn	\$320,280			\$320,280
<b>Total Income</b>	<b>\$440,129</b>	<b>\$71,536</b>	<b>\$36,586</b>	<b>\$541,161</b>
<b>EXPENSES</b>				
Salaries and Benefits	\$377,598			\$377,598
Program Support	\$7,131			\$7,131
Office Supplies	\$1,420			\$1,420
Office Equipment	\$1,566			\$1,566
Phone	\$5,376			\$5,376
Postage	\$5,051			\$5,051
Printing	\$8,510			\$8,510
Exhibits	\$863			\$863
Collections	\$630			\$630
OSA Vehicle Expenses	\$5,390			\$5,390
Professional Development	\$1,182			\$1,182
Student Awards	\$5,940			\$5,940
Prospect Cultivation	\$960			\$960
Volunteer Expenses	\$152			\$152
Building Renovation	\$497			\$497
<b>Total Expenses</b>	<b>\$422,266</b>			<b>\$422,266</b>

<sup>1</sup>CSMNH's finances are audited within the audits UConn Foundation and the University of Connecticut

## FY 2004 REVENUE



Donations 13%

Investment Income 8%

Grants 1%

Membership 5%

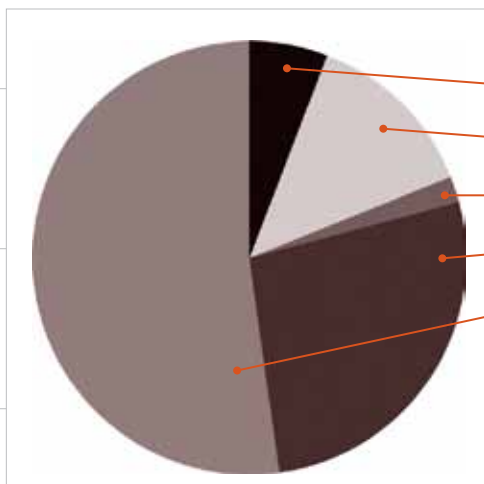
Program Fees 3%

OSA Support 3%

UConn Allotment 67%



## FY 2004 EXPENSES



Administration\* 6%

Exhibits/Collections\* 13%

Office Support 2%

OSA\* 27%

Programs\* 52%

\*includes salaries



Photo by Jeff Burriham

# VOLUNTEERS

make an important contribution to the Museum. Their time and effort is much appreciated!

© Robert Rattner



Photo by Sue DiBiasio



## Contributing Science & Nature Experts

Gary Alpert  
 Safra Altman\*  
 Luma Abu Ayyash\*  
 Ken Bliss  
 Ed Bosman  
 Pat Bresnahan\*  
 Brenda Brown  
 Alesia Burge\*  
 Janine Caira\*  
 Mark Carabetta  
 Rich Chyinski  
 Bryan Connolly  
 Paula Coughlin  
 Roberta Coughlin  
 Heather Crawford  
 Frank Crohn  
 Jamie Cromartie  
 Robert Cromartie  
 Ellen Cromley\*  
 Dan Cruson  
 Sue Cunningham  
 Jenny Dickson  
 Dan Drew  
 Robert Dubos  
 Dan Duran  
 Wade Elmer  
 Chris Elphick\*  
 Luci Fernandes\*  
 Ed Force  
 Dan Forrest  
 Heather Fried\*  
 Frank Gallo  
 Parker Gambino  
 Bernard Goffinet\*  
 Rae Gould  
 Bob Gradie  
 Hank Gruner  
 John Hamilton\*  
 Al Harper  
 Julie Henry\*  
 Susan Herrick  
 Kent Holsinger\*  
 Cynthia Jones\*  
 Geoffrey Krukar  
 Walt Landgraf

Lori LaPlante\*  
 Don Les\*  
 Louise Lewis\*  
 Paul Lewis\*  
 Jennifer Loose  
 Jason Mancini  
 Jennifer Mattei  
 Michael McAloon\*  
 Kevin McBride\*  
 Hilary McManus\*  
 Les Mehrhoff\*  
 Ken Metzler  
 John Mills  
 Karen Morando  
 Natalie Munro  
 Leonard Munstermann  
 Nancy Murray  
 Mike Nelson\*  
 Janet Novak  
 Jen O'Brien\*  
 Brigid O'Donnell\*  
 Jane O'Donnell\*  
 Morty Ortega\*  
 Pat Owen\*  
 Peter Picone  
 Eric Quinter  
 Carl Rettenmeyer\*  
 Marian Rettenmeyer  
 Florian Reyda\*  
 Lynn Rogers  
 Margaret Rubega\*  
 Eric Schultz\*  
 Kurt Schwenk\*  
 Derek Sikes\*  
 Jim Sirch  
 Harley Stoleson  
 Terry Stoleson  
 Mike Thomas\*  
 Andrew Townesmith\*  
 Stephen Trumbo\*  
 Casper Ultee  
 Susan Van Kleef  
 Jacque Veilleux  
 Monty Volovski\*  
 Dave Wagner\*  
 Kevin Walsh  
 Greg Watkins-Collwell

## Program Volunteers

Dinah Wells  
 Kent Wells\*  
 Marta Wells\*  
 Gregor Yanega\*  
 Colin Young\*  
 Betsy Anderson  
 Ellen Bender  
 Barbara Bernard  
 Kim Berry  
 Garry Clifford\*  
 Roberta Coughlin  
 Barbara Davis  
 Ashley Doria\*  
 Dale Dyer  
 Donna Ellis\*  
 Dolle Fischer  
 Elmer Fischer  
 Pamela Franko\*  
 June Guillow  
 Ken Guillow  
 Kim Hargrave  
 Bettejane Karnes  
 John Karnes  
 Alice Kolega  
 Hannah Kotler  
 Mille Kramer  
 Ruth Ladd  
 Peter Landry  
 Lou Lent\*  
 Doris Letsch  
 E. J. Letsch  
 Keith Lyons\*  
 Paul Maidment  
 Lois Maloney  
 Connie Marsh  
 Betty Miller  
 Mary Palmer  
 Polly Palmquist  
 Brittany Richmond  
 Betty Savage  
 Walter Sekula, Sr.  
 Anne Smith  
 Eunice Spicer  
 Virginia Stallman  
 Roxane Steinman\*  
 Anna Storrs

## Office of State Archaeology

Peggy Taylor  
 Sandi Tosi  
 Barbara Urban  
 Margery Winters  
 Betty Wardwell  
 Stephen Bartkus  
 Bonnie Beatrice  
 Kenneth Beatrice  
 Kathleen Boushee  
 David Cooke  
 June Cooke  
 Dr. Henri Coppes  
 Kristy Dahlstrom  
 Luci Fernandes\*  
 Carrie Gray\*  
 Bruce Greene  
 Carol Hallas  
 Dreda Hendsay  
 Mae Johnson  
 Sven Johnson  
 Bill Keegan\*  
 Kristen Keegan  
 Kathie Kelleher  
 George Kinsella  
 Richard LaRose  
 Len Messina  
 Jackie Nadeau  
 Chris Noble  
 Gary Nolf  
 Roger Olsen  
 Renee Petruzelli  
 Mike Raber  
 Jack Rajotte  
 Paul Scannell  
 Bill Schultz  
 Sherly Scruggs  
 Anita Sherman  
 John Spaulding  
 Roger Thompson  
 Jim Trocchi  
 Barbara Urban  
 Tao Zhu\*  
 \*UConn faculty, staff, students, or alumni.

	Arch. Associates of Greenwich, Inc. Alphonse & Ruth A. Avitabile Gary W. Bigelow Linda E. & Richard E. Bireley	David & Carolanne Markowitz Charles & Dorothy McCaughtry Naugatuck Valley Audubon Society Northwestern Community College	Joyce B. Humphrey Anne H. Isbister Alice B. Jansen James R. & Jane L. Knox Leslie C. Kurz
<b>\$25,000 and More</b> Anonymous	Harry H. & Honore Birkenruth Richard A. & Nancy Booth Charles T. & Rita A. Borovicka Melode Brasher William R. & Jean F. Bronson Suzana & Bruce Burchsted	Norton School Norton School PTA Nutmeg Framing Gallery Richard R. & Jane Pacelli Plainville Historical Society Barbara Potterton	Frances J. Lareau Jean L. Laughman Robert W. & Kathleen Lisiewski Ava L. & David D. Little, Jr. Jean B. & William T. Lonergan Robert J. Martinchek & Family John & Margaret McCarrick Gregory A. & Vibha Jain Miller Thomas J. & Carol B. O'Dell Fred & Kathleen Otter John J. & Nancy A. Pacyna
<b>\$10,000 - \$24,999</b> Anonymous	Karin Burns Capt. Nathan Hale Middle School Robert Colwell & Robin Chazdon Cheshire Land Trust, Inc. David D. Chestnut, Sr. Lyle F. Chichester	William E. & Candace F. Powers Preston Historical Society, Inc. Ridgefield Academy, Inc. Ridgefield Academy, Inc. Parent's Assoc. Mark J. Roy Chandra Roychoudhuri	Pauline A. Palmquist William & Marian Pohley David R. Primozich Richard W. Redfield Kathleen M. Riley Ronald L. Rivard Michael A. & Jill Collier Robinson Rocky Hill Historical Society Todd A. & Janice A. Sauer Brian & Nancy Schwanda Ann K. Sedgwick
<b>\$5,000 - \$9,999</b> Carol B. Ireland & Mary Beard Deming	Citizens for Easton Hugh D. & Ellen M. Clark Martha M. Cobbs Nan R. & Douglas J. Cooper Margaret Costantino William & Ruth Crepet Ann M. Curren Michael D. & Margaret M. Curtis Robert S. & Marilyn C. Curtis Robert J. Dess Samuel & Anne Dodd	James R. & Deborah S. Russel Carl W. Schaefer Victor E. & Jan Scottron Kenneth P. Sebens Winthrop & Anne Smith Kenneth Dardick & Judit Stein Mary E. Thatcher Arlene S. Thompson Trinity College Bruce & Virginia Valentine Voluntown PTA Lesa & Jeff Von Munkwitz-Smith	Patricia A. Shannon Abigail Smith Roberta K. Smith Suzanne A. Staubach Sally T. Sumner John & Patricia Tanaka Elizabeth M. Thomas Francis Rice Trainor Brancia & Sjeff A. Vandenberg Jay & Susan Vining Rudy F. & Gail L. Voit Kentwood D. & Marta M. Wells Lee F. West
<b>\$1,000 - \$4,999</b> Audubon Society of NE Connecticut Ellen J. Cook Ethel L. Cook Eaton Charitable Fund Kent E. Holsinger Robert Kamerschen William & Diane Morlock Richard & Hinda Rosenthal Foundation Friends of the Office of State Archaeology	East Granby Historical Society, Inc. East Ridge Middle School PTA Alice Eschholz Kenneth R. & Mary V. Feathers Betty Foster Feingold First Congregational Church Ladies Benevolent Soc. Harry S. & Ann K. Gaucher, Jr. Karen Grava Bruce Y. & Elizabeth Greene Cadet H. Hand, Jr. James D. & Gerry P. Harvey Heinz & Virginia H. Herrmann	Walter I. & Elizabeth Wardwell Winthrop Cemetery Association  <b>\$50 - \$99</b> Ann I. Allen Bea Andrews Anita Ballek David A. Corsini & Delia Berlin Paul W. & Lesley R. Betts Michael J. & Patricia J. Cardin Peter K. & Dorothy O. Cheo Henri & Jacqueline Coppes Michael Bourque & Clemence Corriveau Robert D. & Ellen D. Cushing Gladys A. & Barney E. Daley Carol K. Davidge Elmer M. & Dorothea B. Fischer Robert M. & Brandy S. Gadoury Florence J. & Terrill Goodman John C. Greene Hope Grunske Gretchen O. & Roswell G. Hall III Lawrence E. & Gayle R. Hightower Katherine K. & Hamilton Holt Frederic W. & Jean K. Hopkins Debra B. Hultgren	Michael A. & Jill Collier Robinson Rocky Hill Historical Society Todd A. & Janice A. Sauer Brian & Nancy Schwanda Ann K. Sedgwick Patricia A. Shannon Abigail Smith Roberta K. Smith Suzanne A. Staubach Sally T. Sumner John & Patricia Tanaka Elizabeth M. Thomas Francis Rice Trainor Brancia & Sjeff A. Vandenberg Jay & Susan Vining Rudy F. & Gail L. Voit Kentwood D. & Marta M. Wells Lee F. West Anne Wiant-Rudd William A. & Martha Wilson John E. Wraight, Jr.
<b>\$500-\$999</b> Anonymous Robert J. Behnke Angela & Nick Bellantoni Peter Bulkeley George A. Clark, Jr. Keith Wilson & Marjorie Hayes Mrs. Alfred J. Hunyadi A. J. Lazuk Louise M. Lent Dennison J. Nash John J. & Elizabeth E. Spaulding Margaret B. Taylor	William & Ruth Crepet Ann M. Curren Michael D. & Margaret M. Curtis Robert S. & Marilyn C. Curtis Robert J. Dess Samuel & Anne Dodd East Granby Historical Society, Inc. East Ridge Middle School PTA Alice Eschholz Kenneth R. & Mary V. Feathers Betty Foster Feingold First Congregational Church Ladies Benevolent Soc. Harry S. & Ann K. Gaucher, Jr. Karen Grava Bruce Y. & Elizabeth Greene Cadet H. Hand, Jr. James D. & Gerry P. Harvey Heinz & Virginia H. Herrmann Anne L. & Richard P. Hiskes G. Michael Howard Ann H. Hunyadi William A. Hyatt, Jr. Richard & Gail Hyde Christian & Julia Hoseph John W. & Bettejane Karnes Paulette C. Kaufmann Barbara Ann Kipfer Suzy & Rufus Kline Ruth R. Ladd Edward & G. A. Leadbetter Scott K. & Rebecca T. Lehmann Sandra L. Tosi & Paul Maidment	<b>\$50 - \$99</b> Ann I. Allen Bea Andrews Anita Ballek David A. Corsini & Delia Berlin Paul W. & Lesley R. Betts Michael J. & Patricia J. Cardin Peter K. & Dorothy O. Cheo Henri & Jacqueline Coppes Michael Bourque & Clemence Corriveau Robert D. & Ellen D. Cushing Gladys A. & Barney E. Daley Carol K. Davidge Elmer M. & Dorothea B. Fischer Robert M. & Brandy S. Gadoury Florence J. & Terrill Goodman John C. Greene Hope Grunske Gretchen O. & Roswell G. Hall III Lawrence E. & Gayle R. Hightower Katherine K. & Hamilton Holt Frederic W. & Jean K. Hopkins Debra B. Hultgren	Matching Gifts Aetna Foundation, Inc. CIGNA Foundation Matching Gifts Program Northeast Utilities Foundation, Inc. Stop & Shop Foundation The Hartford Financial Services Group, Inc.
<b>\$250-\$499</b> Mary Rogers Beckert Central Connecticut State University William J. Hopkins Carl W. & Julia J. Lindquist John L. C. Lof Mrs. Imogene Penner Antonio H. & Jean J. Romano Jack L. & Jean Scaduto David B. Jill Schroeder Norman D. & Nora B. Stevens Mrs. & Mrs. Harry Townshend David L. & Sylvia H. Wagner	William & Ruth Crepet Ann M. Curren Michael D. & Margaret M. Curtis Robert S. & Marilyn C. Curtis Robert J. Dess Samuel & Anne Dodd East Granby Historical Society, Inc. East Ridge Middle School PTA Alice Eschholz Kenneth R. & Mary V. Feathers Betty Foster Feingold First Congregational Church Ladies Benevolent Soc. Harry S. & Ann K. Gaucher, Jr. Karen Grava Bruce Y. & Elizabeth Greene Cadet H. Hand, Jr. James D. & Gerry P. Harvey Heinz & Virginia H. Herrmann Anne L. & Richard P. Hiskes G. Michael Howard Ann H. Hunyadi William A. Hyatt, Jr. Richard & Gail Hyde Christian & Julia Hoseph John W. & Bettejane Karnes Paulette C. Kaufmann Barbara Ann Kipfer Suzy & Rufus Kline Ruth R. Ladd Edward & G. A. Leadbetter Scott K. & Rebecca T. Lehmann Sandra L. Tosi & Paul Maidment	<b>\$50 - \$99</b> Ann I. Allen Bea Andrews Anita Ballek David A. Corsini & Delia Berlin Paul W. & Lesley R. Betts Michael J. & Patricia J. Cardin Peter K. & Dorothy O. Cheo Henri & Jacqueline Coppes Michael Bourque & Clemence Corriveau Robert D. & Ellen D. Cushing Gladys A. & Barney E. Daley Carol K. Davidge Elmer M. & Dorothea B. Fischer Robert M. & Brandy S. Gadoury Florence J. & Terrill Goodman John C. Greene Hope Grunske Gretchen O. & Roswell G. Hall III Lawrence E. & Gayle R. Hightower Katherine K. & Hamilton Holt Frederic W. & Jean K. Hopkins Debra B. Hultgren	Matching Gifts Aetna Foundation, Inc. CIGNA Foundation Matching Gifts Program Northeast Utilities Foundation, Inc. Stop & Shop Foundation The Hartford Financial Services Group, Inc.
<b>\$100 - \$249</b> Abbot Laboratories Fund	Scott K. & Rebecca T. Lehmann Sandra L. Tosi & Paul Maidment	Frederic W. & Jean K. Hopkins Debra B. Hultgren	Gifts in Kind Carl & Marian Rettenmeyer



University of Connecticut

Connecticut State Museum of Natural History & Connecticut Archaeology Center

Unit 1023, Storrs, CT 06269-1023

[www.cac.uconn.edu](http://www.cac.uconn.edu)

860•486•4460

---