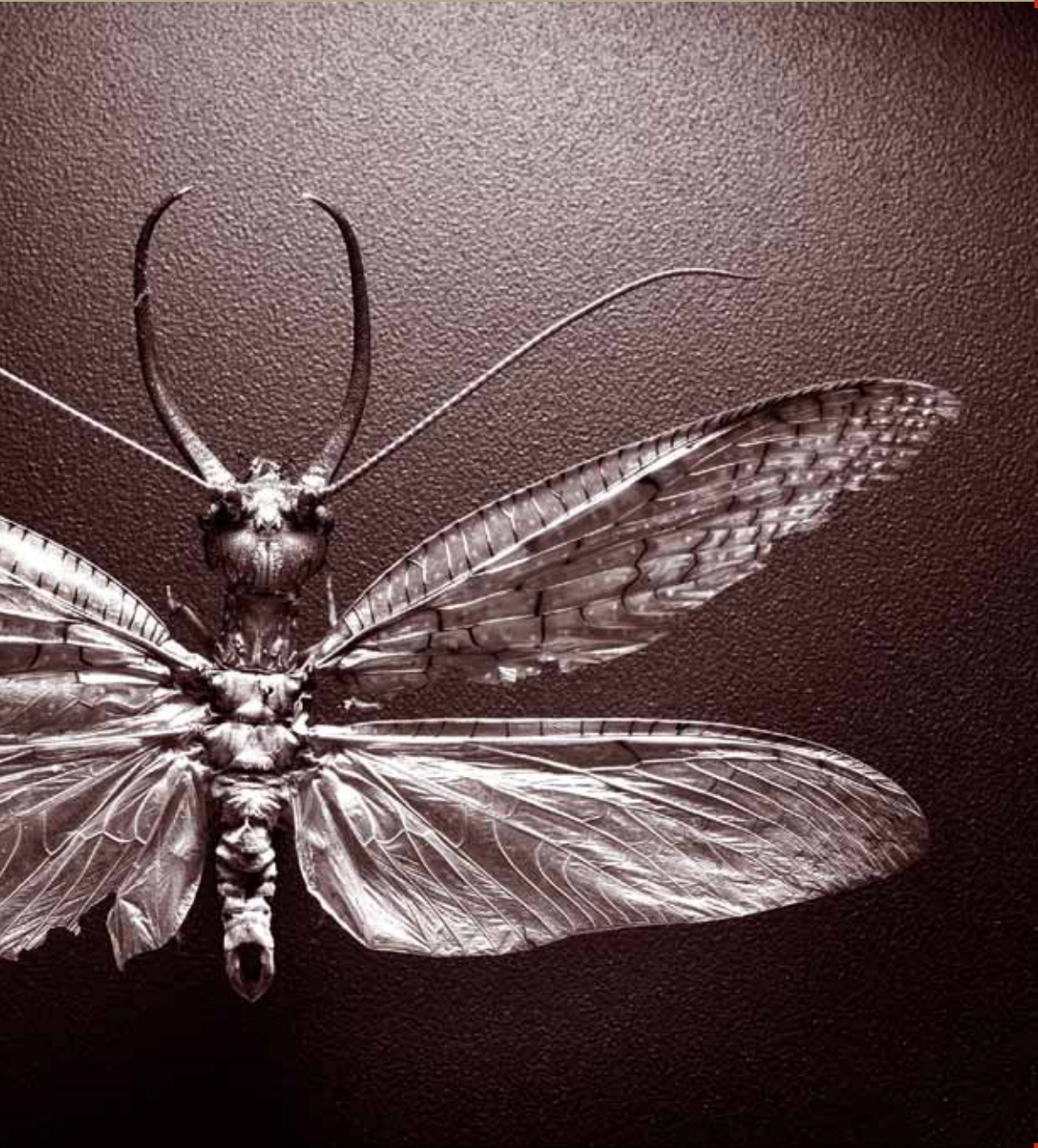




CONNECTICUT STATE MUSEUM OF NATURAL HISTORY 2002 ANNUAL REPORT



O U R M I S S I O N

The Connecticut State Museum of Natural History serves the University of Connecticut and the public by promoting an understanding and appreciation of our natural and cultural world, especially as related to New England.



Within the mission, the Museum's fundamental goals are to acquire and preserve collections and to use collections, exhibits, and programs:



- To cultivate an interest about natural history among the citizens of Connecticut.
- To communicate the significance and vulnerability of archaeological and natural resources.
- To enhance university learning, teaching, and research.
- To enrich elementary and secondary education.
- To acquire and present knowledge about the natural and cultural history of Connecticut and New England.
- To showcase the academic resources of the University of Connecticut and provide a public connection to them.



BOARD OF DIRECTORS AND STAFF

Board of Directors
Kent E. Holsinger, UConn, Chairman
Carmen Cid, Eastern CT State University
Jean Crespi, UConn
Robert E. Dewar, UConn
William J. Hopkins, Dept of Agriculture
Ralph Lewis, Dept of Environmental Protection
William Morlock, UConn Alumnus
Karin Peterson, CT Historical Commission
David B. Schroeder, UConn
Eric Schultz, UConn
James A. Slater, UConn
Sandra Vlock, AKV Architects
David L. Wagner, UConn
Steven Weinberg, Dept of Education

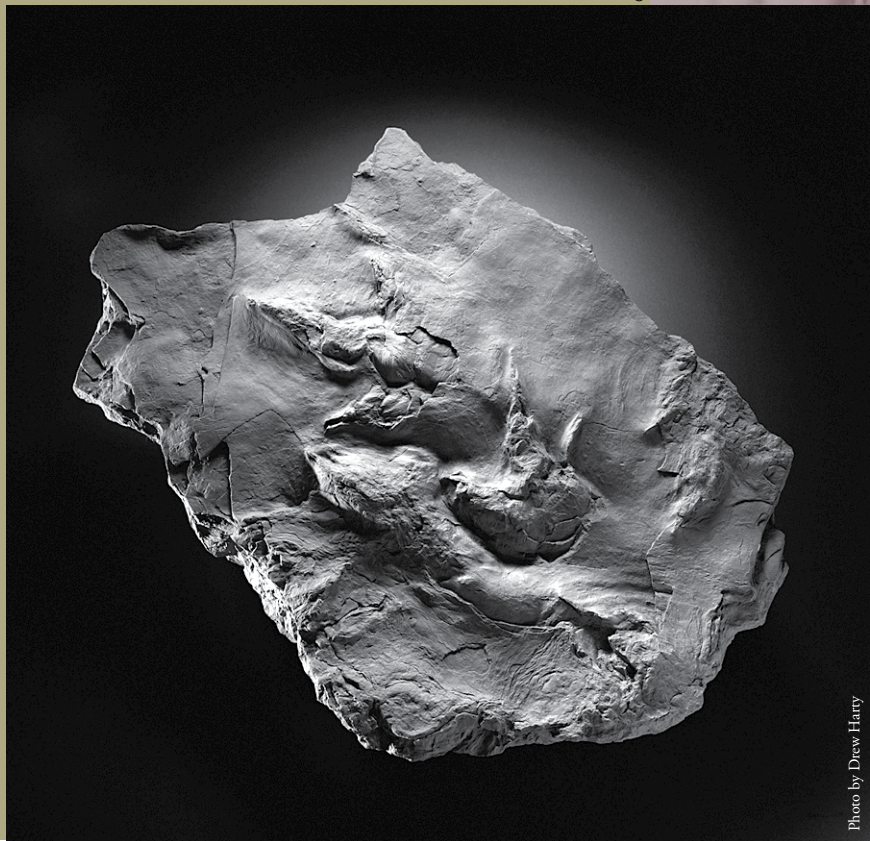
STAFF

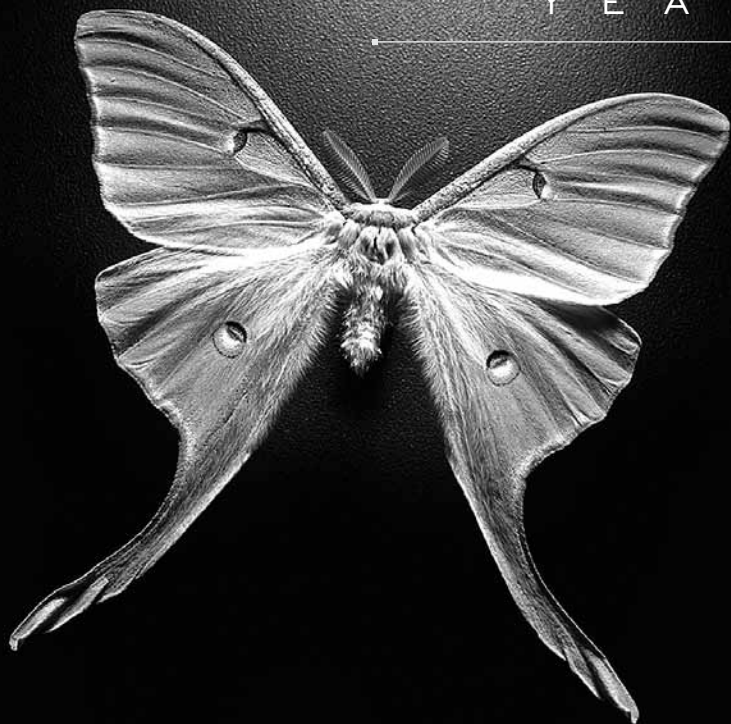
Ellen J. Censky, Director
Nicholas F. Bellantoni, Connecticut State Archaeologist
Susan Broneill, Museum Receptionist (hired, Oct; part-time)
Carol Davidge, Public Information Coordinator (part-time)
Collin Hart, Exhibits Planner
Leanne Kennedy, Education Coordinator
Cheri Kotler, Program Coordinator & Collection Manager
Ann Merritt, Membership Coordinator (part-time)

Carl Rettenmeyer, Founding Director Emeritus

WORK STUDY/STUDENT WORKERS

J. Correnenti
Jill Eisenbach
Luci Fernandes
Richard Freedman
R. R. Gradie
Lauren Grunberg
Dawn Jacobs
Jon Langdon-Phillips
Keith Lyons
Tina Miner
J.A. Nadeau
C.A. Tryon
Shelley Smith
Nadine Warner
Tao Zhu





Fifteen years ago we dreamed of a museum building that had exhibits and collections under one roof. With the passage of 21st Century UConn, we are ever closer to realizing this dream. 21st Century UConn is the 11-year, \$1.3 billion initiative that will extend the landmark UConn 2000 program through 2015. The Museum of Natural History is earmarked to receive much of the funding for our building project. The project includes renovation of the second and third floors in the main building and construction of an addition to the front of the building that will provide a grand entrance into the Museum as well as serve

the functional purpose of housing stairs and an elevator. It also provides for construction of an addition extending off the back of the building that will house the collections and the Office of State Archaeology. Our hope is that the Museum project will be one of the first done in the new funding phase and that we will open our doors to you sooner rather than later.

Meanwhile, we have instituted a new exhibit series in our small changing-exhibit gallery. The series, called *Look Closer*, explores the relationships between people and the environment using the Museum's collections. Our plan is to produce a new exhibit every

three to four months, with each exhibit focusing on a different part of the collection. Our first exhibit opened in April and focused on butterflies and moths. We had a wonderful response to the exhibit as evidenced by the visitor survey. In fact, 95% of the respondents rated their overall experience at the Museum as good to excellent. We also received other helpful suggestions that will be incorporated into future exhibits. The subject of the second exhibit in the series is archaeology, and the third is geology.

This year's BioBlitz continued with its success as an educational event as well as in attracting media attention. NBC's *Today Show* covered the event and produced a 5-minute segment that aired on their Monday morning program. In addition, the National Geographic documentary on last year's event finally aired in March and received excellent ratings.

The Office of State Archaeology continues to do a phenomenal job of preserving our state's heritage through its education and research activities. In the past year, the OSA lent technical assistance to a record number of projects (141).

Of course, all of our many accomplishments could not have been done without the support of our many volunteers and members.

Thank you.

Ellen J. Censky
Ellen J. Censky, Director





This past year our educational efforts were focused on introducing the public to our building through a new series of all-ages events and small exhibits. The *Look Closer* exhibit series was under development through the winter months, with two main objectives driving the process. The first objective was to enable people to establish a personal connection with the physical space of the new building. Even before renovation, we want people to become accustomed to visiting the Museum. By having small-scale events and exhibits in our current space, we plan to give visitors a feel for the direction that the Museum is going. As the physical space grows, so will the exhibits. The second objective is to develop a clear and consistent educational message that will be carried through consecutive exhibits and programs. We want to utilize Museum objects and specimens to communicate the role of collections in museums, and, moreover, to communicate the relevance of collections to people's lives. The exhibit series opened in April with *Look Closer: Butterflies & Moths* and ran through July. We will follow with *Look Closer: Archaeology* in August and *Look Closer: Geology* in January. These exhibits will help us begin to develop concepts for the permanent exhibits.

In conjunction with this exhibit series, we are conducting visitor evaluations and will use the responses to both improve subsequent exhibits in this series and to guide us in our planning for the second floor exhibit hall.

We have also made several changes to our other educational offerings. We are offering more workshops, tours, and lectures. We have initiated a new workshop series just for children, and have increased the number of summer camps that we provide. We are also coordinating our offerings around exhibit themes. For example, when *Look Closer: Butterflies & Moths* was on display, we offered a number of workshops and lectures about butterflies and moths. In the past year, over 50,000 individuals participated in a variety of educational offerings.

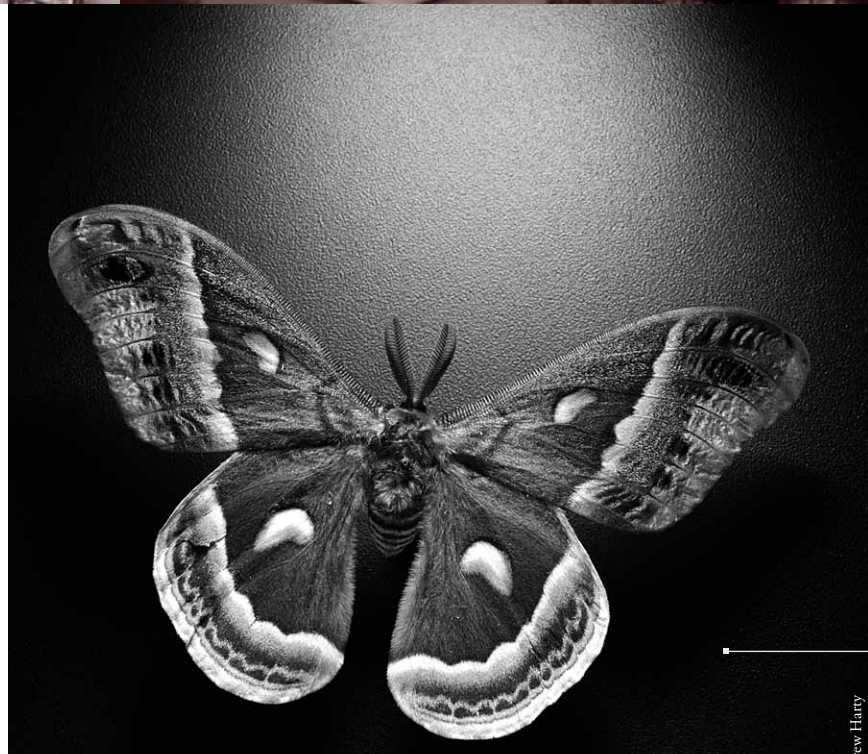
BIOBLITZ The fourth annual BioBlitz was held at Mohegan Park in Norwich on May 31 and June 1. This year's BioBlitz was part of National Biodiversity Month, a month-long celebration of biodiversity across the country. The biological survey was conducted by 116 scientists from UConn and 21 other organizations, assisted by 20 students from Norwich Free Academy and six students from Watkinson School in West Hartford. A total of 1,898 species were found. Another 14 organizations helped the Museum provide activities for the 2,000 people who attended the event. Prior to the BioBlitz, the Museum traveled to three Norwich area schools to provide educational outreach related to biodiversity and the BioBlitz. The BioBlitz was covered by the *NBC Today Show*, and the 5-minute segment aired on June 3.

Last year's BioBlitz at Tarrywile Park in Danbury was covered by National Geographic Television. The hour-long documentary aired on March 3, with follow-up presentations on March 6, 9, and 10. As a result of the coverage, the Museum's BioBlitz was chosen as the grand-finale event for the nationwide Biodiversity Month.

© Robert Rattner

Photo by John Galayda, courtesy of *The Williamantic Chronicle*

Photo by Jeff Burnham





SPECIAL EVENT OPEN HOUSES

We hosted two Special Event Open Houses, the first in October to introduce people to our new space, and the second in April in conjunction with the *Look Closer: Butterflies & Moths* exhibit opening. Each event provided hands-on learning activities for children and families as well as experts in the exhibit to field any questions that visitors had. More than 1,000 people attended these two events.

WORKSHOPS Workshops are an intimate way to excite people about natural and cultural history. These are hands-on experiences led by Museum staff and UConn faculty, staff, and graduate students. We offered 41 workshops on topics as varied as bird migration, mineral collecting, mushrooms, insects, fish anatomy, and local archaeology. More than 700 individuals attended.



LECTURES This year the Museum added the *Nature Matters Lecture Series* in Ridgefield, CT to its lineup. The Museum promoted two lecture series on campus, the *Edwin Way Teale Lecture Series* and the *Museum Lecture Series*, plus our new series in Ridgefield, CT. In addition, the Museum offered lectures across the state to schools, community groups, and professional organizations. In the past year, the Museum offered 19 lectures on-campus and 75 lectures off-campus, and more than 4,700 people attended.

CHILDREN'S PROGRAMS This year we offered three, three-day summer camps for children in grades K through 9 and one five-day camp for those in grades 3 through 6. Children explored nature on the UConn campus and in the laboratory. We also initiated new Kids-Only Workshops. Each workshop in this series explored a different

discipline of museum sciences. We also offered metamorphosis-theme birthday parties for children ages 5 through 12. Exploring frog or butterfly metamorphosis, the parties included hands-on learning activities in the exhibits as well as games and unique crafts to make and take home.

TOURS The Museum provided tours of the Museum's exhibit gallery and the Ecology and Evolutionary Biology Greenhouses to more than 650 individuals and school groups.

SCHOOL AND COMMUNITY OUTREACH Museum staff provided educational outreach programming on biodiversity and the BioBlitz to two science fairs in the state and seven schools, including our first school-based BioBlitz at the Stamford Magnet Middle School. Approximately 8,500 individuals participated in the activities.

STUDENT OPPORTUNITIES The Museum provides opportunities for students to work with Museum staff to gain experience in areas of their interest. This year, UConn School of Education student Rachel Phalen worked with Education Coordinator Leanne Kennedy to develop educational activities on butterflies and moths that were used in conjunction with the exhibit, *Look Closer: Butterflies & Moths*. UConn students Kate Dambach and Becky Stygar assisted Program Coordinator and Collection Manager Cheri Kotler with inventorying the Museum's collections. Four high school students interested in a career in archaeology interned with State Archaeologist Nick Bellantoni for three weeks in the summer. In addition, several students volunteered in the OSA laboratory. Students from Norwich Free Academy and Wilkinson School assisted at the BioBlitz.





CONFERENCES Once again, the Museum, in partnership with Connecticut Outdoor and Environmental Education Association, co-sponsored their annual conference *2002: Learning in Your Own Backyard* for environmental educators. The annual conference has grown in size since our partnership began. This year 124 individuals attended the conference.

TRAVELING EXHIBITS The Museum continues to offer its 27 traveling exhibits for use by nature centers, libraries, community groups, and other organizations. This past year, over 27,000 people saw 14 exhibits at various venues throughout the state.

Three copies of the table-top display on Connecticut's underwater archaeology were designed, produced, and exhibited to supplement the content presented on the newly launched Underwater Archaeology web site (www.mnh.uconn.edu/underwater/).

WEB PAGE The Museum continues to improve and enhance its web site. This past year, we added the BioBlitz to our web site (www.mnh.uconn.edu/BioBlitz/index.html), highlighting unique aspects of each of the Museum's BioBlitz events, including new discoveries. We continue to improve the Underwater Archaeology web site that brings together information on our underwater heritage.

M E D I A R E L A T I O N S

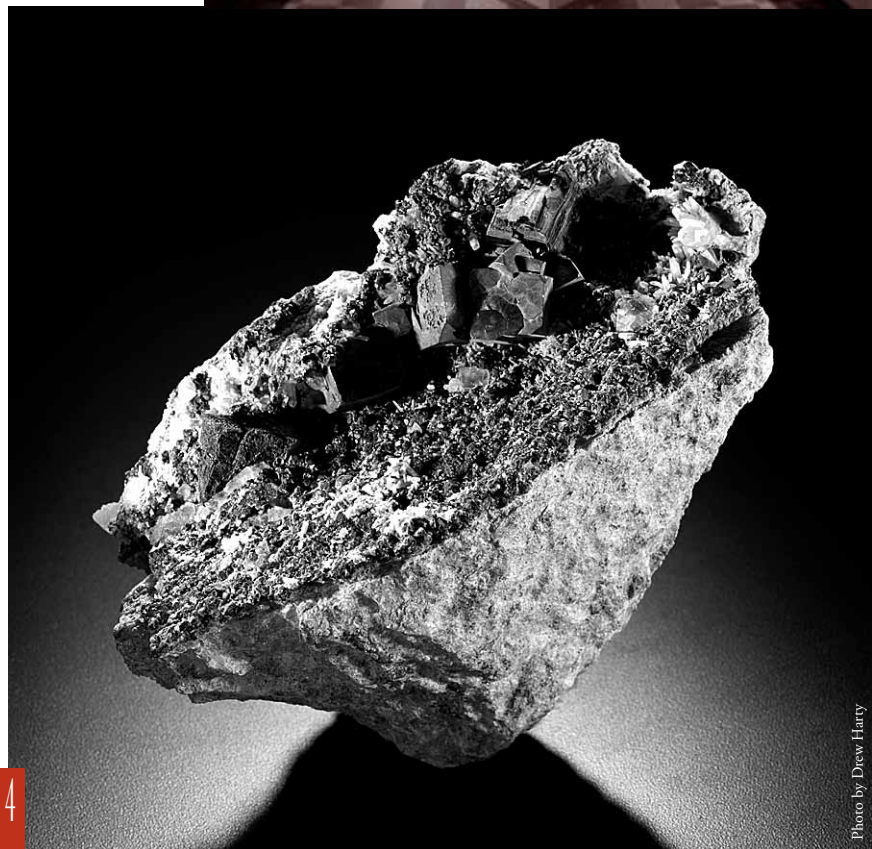
To promote public awareness of the Museum and its activities, the Media Relations Office had considerable success with its efforts in FY2002. The Museum received more than 6,200 inches of coverage (equal to about 62 full pages of press) in more than 179 articles, as well as coverage on more than 12 radio programs and 22 television spots. Some of the highlights were:

National Geographic Television aired their hour-long documentary on the Museum's BioBlitz on March 3, with follow-up presentations on March 6, 9, and 10. The response from the audience was great with a doubling of MSNBC viewers in the first 15 minutes and a retention of that audience through the show.

The NBC *Today Show* covered the BioBlitz this year with a crew of 4 including correspondent Bob Dodson. The 5-minute segment aired on the *Today Show* on Monday, June 3.

Coverage of the BioBlitz included *The New York Times*, *The Norwich Bulletin*, *The Boston Herald*, *Associated Press*, *The Hartford Courant*, *The Day*, *The Journal Inquirer*, and NBC30 News, WTNH Channel 8 News, *Field Notes* on WNPR/WFCR, WICH, and WTIC.

Coverage of Bellantoni and a Connecticut River shipwreck included WTNH Channel 8, Fox 61, CPTV, WNPR, WTIC-AM, *The Hartford Courant*, and *Associated Press*.





The Office of State Archaeology (OSA) is mandated by the state legislation "...to conduct research and ... to protect and preserve archaeological remains that are threatened with destruction or loss due to construction or otherwise." As a result of this mandate, the OSA was involved in 18 field excavations in the past year. Among these excavations was investigation of a shipwreck in the Connecticut River. The ship appears to have been a schooner or barge carrying a load of brownstone from Connecticut River Valley quarries.

The OSA also did field reviews or provided technical assistance to 141 different projects, including the CSS Hunley, the Confederate submarine that was brought up from Charleston Harbor in South Carolina. Connecticut soldier Ezra Chamberlin's identification tags were found on the submarine, raising the question – was he a prisoner or traitor? – a question that the OSA is working to answer. In addition, the OSA reviewed 217 economic development projects for 80 different towns.

The OSA has nearly completed work with the National Park Service to develop a management tool to make informed decisions about cultural resources along the Appalachian Trail in Connecticut. This model will be used in other states that are transected by the Trail.

The Director continued to work with students and colleagues on several papers that resulted from the *NSF Research Experiences for Undergraduates* trip to the island of Anguilla.

PROFESSIONAL APPOINTMENTS

Bellantoni, N. B.

Member, Connecticut Coordinating Committee for the Promotion of History, Connecticut Historical Society
 Corporator, Middlesex Community College Foundation, Inc.
 Board of Trustees, Institute for American Indian Studies
 Nominated, Society for American Archaeology's Nominating Committee Position A

Censky, E. J.

Board of Governors, American Society of Ichthyologists and Herpetologists, 1998-2002
 Institute of Museum and Library Services General Operating Support Reviewer, 2001-2002
 Chair, Biodiversity Month, IBOY (International Biodiversity Observation Year), 2002
 Nominated, Board of Directors, Society for the Study of Amphibians and Reptiles

AWARDS PRESENTED TO UCONN STUDENTS

Kathleen Engelmann, Graduate Teaching Assistant Award, \$250
 Lori Hosaka Laplante, Determining the motivation of female nuptial signaling in wrasses, Rankin Fund, \$206; Wetzel Fund, \$279; Whitworth Fund, \$115
 David Lubertazzi, National meeting attendance, Slater Fund, \$250
 F. Michael McAloon, Morphological study of *Linschosteus karupi*, a blood-feeding Reduviid from India, Penner Fund, \$200
 Brigid O'Donnell, The collection and identification of Mayflies: Systematics & biomonitoring seminar, Trainor Fund, \$272; Decoursey Fund, \$28
 Nicola Raine Plowes, Pilot study of African Social Insects, Slater Fund, \$300
 Seema K. Pursnani, Undergraduate Award for Research, \$100
 Florian Reyda, Geographic areas unexplored for tapeworms of freshwater stingrays, Penner Fund, \$600
 Jonathan Richmond, The evolution of ontogeny in parallel speciation in Scincid lizards, Wetzel Fund, \$300
 Jadranka Rota, Taxonomy of Choreutiidae (Lepidoptera: Sesiioidea), Penner Fund, \$507; DeCoursey Fund, \$65
 Anne St. Onge, Graduate Teaching Assistant Award, \$250
 Gregor Yanega, Functional components of insectivory in hummingbirds, Manter Fund, \$447; Clark Fund, \$203

PUBLISHED

Bellantoni, N. 2002. The Greenman House Bone Assemblage, Mystic, Connecticut. Technical report to the Mystic Seaport Museum monograph on the archaeological excavations conducted by Connecticut College in 1995.
 Slater, J. and E. J. Censky. 2002. (Review of) Bibliography of the Natural History of the Lesser Antilles with Particular Reference to the Terrestrial and Freshwater Environment (1900-2000). In Waldmann, G. and M. Stevens (eds.) 2001. Acta Biologica Benrodis. Supplement 8, 209 pp. D-42624 Solingen, Dusseldorf, Germany. Florida Entomologist 85(1):292-293.
 Shaw, J. J., E. J. Censky, and R. Powell. 2002. *Ameiva corvina*. Catalog of American Amphibians and Reptiles 747.1-747.2.
 White, A. M., E. J. Censky, and R. Powell. 2002. *Ameiva corax*. Catalog of American Amphibians and Reptiles 746.1-746.2.

IN PRESS

Censky, E. J. Dog Island Days. In Powell, R. and R. Henderson (eds.) Islands and the Sea: Essays on Herpetological Exploration in the West Indies, SSAR Contrib. Herpetol.
 Hodge, K., E. J. Censky, and R. Powell. Amphibians and Reptiles of Anguilla. Anguilla National Trust Special Publication.
 White, A. M., R. Powell, and E. J. Censky. 2002. On the thermal biology of *Ameiva* (Teiidae) from the Anguilla Bank, West Indies: does melanism matter? Amphib.-Rept. 23:



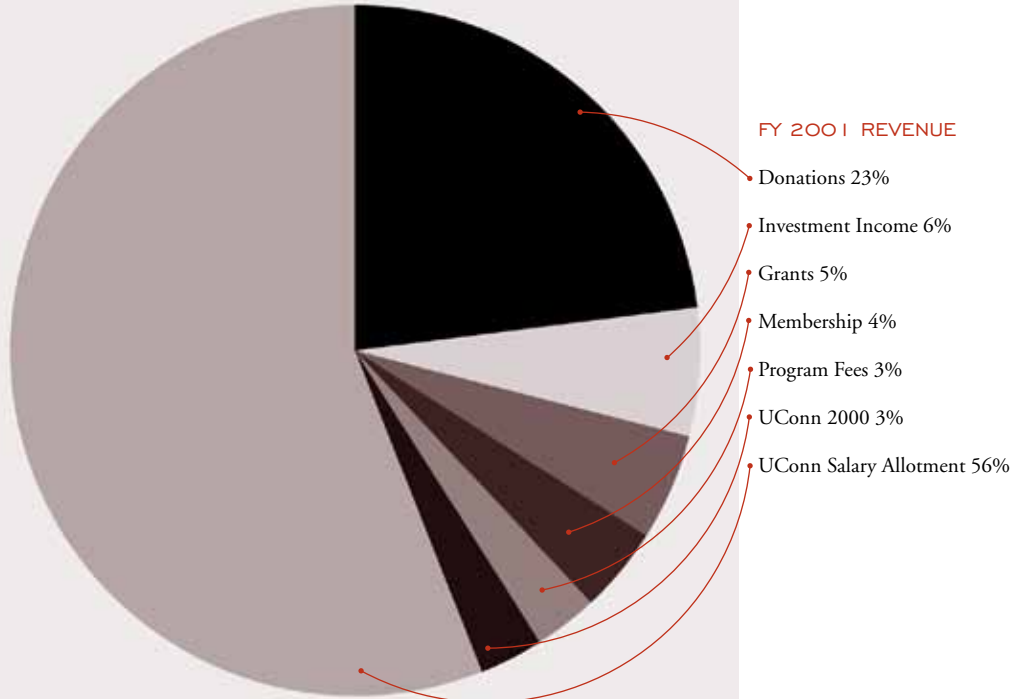
FINANCIAL SUMMARY¹



FOR YEAR ENDING JUNE 30, 2002

	Operating Funds	Endowment Income Acc	Endowment Principle Acc	Building Fund	Exhibit Fund
REVENUE					
Donations	\$ 31,009		\$ 38,187	\$ 48,164	\$ 34,273
Membership	\$ 25,697				
Grants	\$ 1,500			\$ 30,000	
Investment Income		\$ 37,746			
UConn 2000 State Match			\$ 18,470		
Programs, Fees, etc.	\$ 18,050				
OSA Teaching Stipend	\$ 1,500				
Rental Income	\$ 2,515				
Store Revenue	\$ 835				
Allotment from UConn	\$ 371,604				
Total Income	\$ 452,710	\$ 37,746	\$ 56,657	\$ 78,164	\$ 34,273
EXPENSES					
Salaries	\$ 426,569				
Program Support	\$ 16,041				
Office Supplies	\$ 2,247				
Office Equipment	\$ 1,915				
Phone	\$ 6,517				
Postage	\$ 5,874				
Printing	\$ 8,111				
Exhibits	\$ 8,252				
Collections	\$ 630				
OSA (excluding phone & postage)	\$ 5,404				
Store Merchandise	\$ 372				
Professional Dues	\$ 55				
Professional Development	\$ 1,268				
Student Awards	\$ 2,022				
Rental Upkeep	\$ -				
Prospect Cultivation	\$ 2,222				
UF Administrative Fee	\$ -				
Building Renovation	\$ 38				
Total Expenses	\$ 487,537	\$ -	\$ -	\$ -	\$ -
Net Income(Loss)	\$ (34,827)	\$ 37,746	\$ 56,657	\$ 78,164	\$ 34,273
Endowment Income Transferred	\$ 34,827	\$ (34,827)			
Change in Net Assets	\$ -	\$ 2,919	\$ 56,657	\$ 78,164	\$ 34,273
Net Assets, beginning of year	\$ -	\$ 181,789	\$ 783,184	\$ 70,545	\$ -
Change in Market Value	\$ -		\$ (84,753)		
Net Assets, end of year	\$ -	\$ 184,708	\$ 755,088	\$ 148,709	\$ 34,273

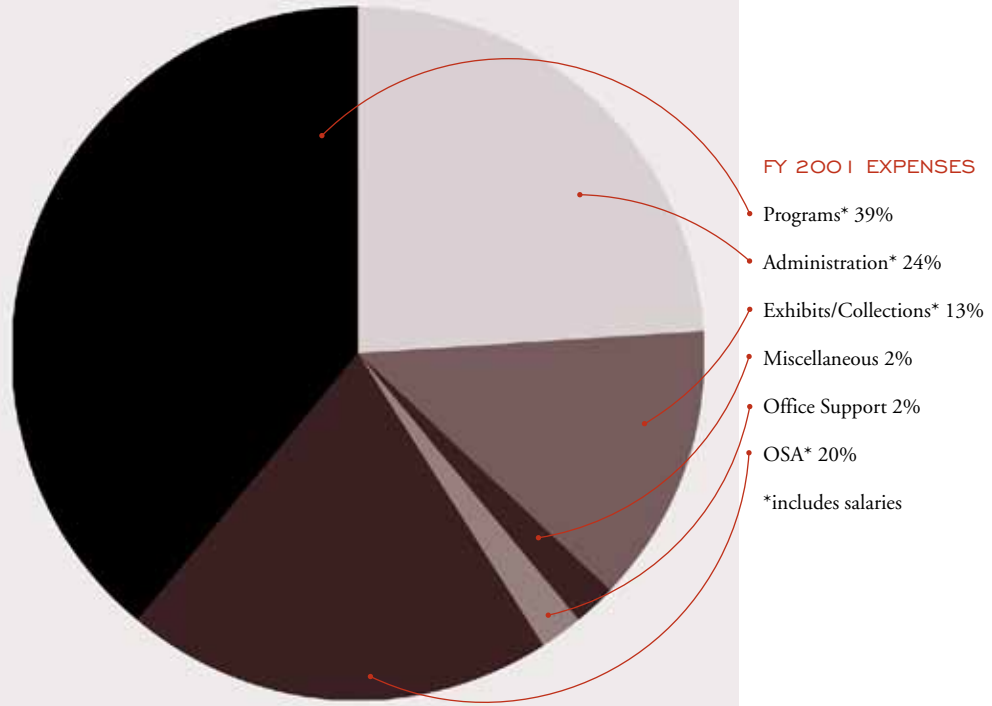
1) CSMNH's finances are audited within the audits UConn



All Funds

FY 2002	FY 2001
\$ 151,633	\$ 124,302
\$ 25,697	\$ 29,162
\$ 31,500	\$ 5,500
\$ 37,746	\$ 40,897
\$ 18,470	\$ 10,495
\$ 18,050	\$ 21,537
\$ 1,500	\$ 10,623
\$ 2,515	\$ 11,400
\$ 835	\$ 1,531
\$ 371,604	\$ 336,796
\$ 659,550	\$ 592,243

\$ 426,569	\$ 419,954
\$ 16,041	\$ 14,034
\$ 2,247	\$ 2,350
\$ 1,915	\$ 3,904
\$ 6,517	\$ 4,905
\$ 5,874	\$ 4,941
\$ 8,111	\$ 7,162
\$ 8,252	\$ 8,009
\$ 630	\$ 5,837
\$ 5,404	\$ 6,041
\$ 372	\$ 550
\$ 55	\$ 230
\$ 1,268	\$ 1,890
\$ 2,022	\$ 4,225
\$ -	\$ 1,858
\$ 2,222	\$ -
\$ -	\$ 650
\$ 38	\$ 2,033
\$ 487,537	\$ 488,573



\$ 172,013	\$ 103,670
\$ 172,013	\$ 103,670
\$ 1,035,518	\$ 1,091,249
\$ (84,753)	\$ (159,401)
\$ 950,765	\$ 1,035,518

V O L U N T E E R S

Volunteers make an important contribution to the museum. This past year 322 volunteers donated over 4,300 hours of time to the Museum.

STUDENT VOLUNTEERS

Bethany Bresnahan
Kate Dambach
Brad Darrow
Jeff Fink
Emily Gregonis
Mike Gregonis
Charlie Horwich
Hannah Kotler
Teddy Lamb
Mary O'Brien
Jensen Rawn
Becky Stygar
Sam Sussman
Colin Urban
Ryan Wagner
Gregg York
Norwich Free Academy students

CONTRIBUTING SCIENCE & NATURE EXPERTS

Gary Alpert
Safra Altman*
Luma Abu Ayyash*
Ken Bliss
Connie Borodenko
Ed Bosman
Pat Bresnahan*
Brenda Brown
Alesia Burge*
Janine Caira*
Mark Carabetta
Rich Chyinski
Bryan Connolly
Paula Coughlin
Roberta Coughlin
Heather Crawford
Jamie Cromartie
Robert Cromartie
Ellen Cromley*
Sue Cunningham
Jenny Dickson
Dan Drew
Sam Droege
Robert Dubos
Dan Duran
Wade Elmer
Chris Elphick*
Luci Fernandes*
Raul Ferreira
Eileen Fielding
Ed Force
Dan Forrest
Heather Fried*
Adam Fuller
Frank Gallo
Parker Gambino
Bernard Goffinet*
Carrie Gray*
Greg Gregonis
Hank Gruner
Julie Hagelin*
Neal Hagstrom
Rich Haley
John Hamilton*
Al Harper
Julie Henry*
Susan Herrick
Kent Holsinger*
Cynthia Jones*
Geoffrey Krukar
Jared Lamb
Lori LaPlante*
Pat LeBeau
Twan Leenders
Don Les*
Louise Lewis*

Paul Lewis*
Jennifer Loose
Jennifer Mattei
Michael McAloon*
Hilary McManus*
Les Mehrhoff*
Steve Messier
Ken Metzler
John Mills
Michael Moccio
Wanda Moccio
Steve Morytko
Leonard Munstermann
Nancy Murray
Mike Nelson*
Janet Novak
Jen O'Brien*
Brigid O'Donnell*
Jane O'Donnell*
Morty Ortega*
Pat Owen*
Richard Peterson
Peter Picone
Daniel Quinter
Eric Quinter
Carl Rettenmeyer*
Marian Rettenmeyer
Florian Reyda*

Kevin Walsh
Greg Watkins-Collwell
Dimah Wells
Kent Wells*
Marta Wells*
Anne Williams
Elizabeth Williams*
Gregor Yanega*
Colin Young*
Bill Yule

PROGRAM VOLUNTEERS

Betsy Anderson
Ellen Bender
Jeff Bendremer
Barbara Bernard
Kim Berry
Kate Boiteau*
Ian Chapman
Denise Ciastko
Garry Clifford*
Kim Berry
Roberta Coughlin
Barbara Davis
Dale Dyer
Donna Ellis*
Dolle Fischer
Elmer Fischer

June Guillow
Ken Guillow
Kim Hargrave
David Heiser
David Herberger
Bettejane Karnes
John Karnes
Al Key
Alice Kolega
Mille Kramer
Ruth Ladd
Peter Landry
Lou Lent*
Doris Letsch
E. J. Letsch
Keith Lyons*
Paul Maidment
Lois Maloney
Connie Marsh
Betty Miller
Maxa Jayne Munstermann
Georgiana Nidelcu
Mary Palmer
Polly Palmquist
Rachael Phelan
Nancy Rawn
Heidi Rrecich
Betty Savage

Walter Sekula, Sr.
Anne Smith
Eunice Spicer
Virginia Stallman
Roxane Steinman*
Anna Storrs
Beth Sullivan
Peggy Taylor
Elaine Thomas
Sandi Tosi
Barbara Urban
Margery Winters
Betty Wardwell

OFFICE OF STATE ARCHAEOLOGY

Stephen Bartkus*
Bonnie Beatice
Kenneth Beatrice
Kathleen Bushee
David Cooke
June Cooke
Henri Coppes
Kristy Dahlstrom*
Luci Fernandes*
Carrie Gray*
Bruce Greene
Carol Hallas

Dreda Hendsay
Mae Johnson
Sven Johnson
Bill Keegan*
Kristen Keegan*
Kathie Kelleher
George Kinsella
Richard LaRose
Len Messina
Jackie Nadeau*
Chris Noble*
Gary Nolf
Roger Olsen
Renee Petruzelli
Mike Raber
Jack Rajotte
Paul Scannell
Bill Schultz
Sheryl Scruggs*
Anita Sherman
John Spaulding
Roger Thompson
Jim Trocchi
Barbara Urban
Tao Zhu*

*UConn faculty, staff, student or alumni.



© Robert Rattner

William Roach
Walt Rode
Margaret Rubega*
Linda Ruth
Juan Sanchez
Matt Sanford
Laura Saucier
Eric Schultz*
John Schwartz
Rebecca Schwartz
Derek Sikes*
Jim Sirch
Jerry Stage
J. T. Stokowski
Harley Stoleson
Terry Stoleson
Mark Szantyr
Clay Taylor
Mike Thomas*
Andrew Townesmith*
Stephen Trumbo*
Casper Ultee
Susan Van Kleef
Jacque Veilleux
Monty Volovski*
Dave Wagner*



D O N O R S



Walter I. & Elizabeth Wardwell
 Donald F. & Vicky Wetherell
 Russell H. & Stephanie A. Wheeler, Jr.
 Walter & Shirley Whitworth
 Cypress Cemetary Association
 Hartford Audubon Society, Inc.
 New Haven Bird Club, Inc.
 Stafford Public Schools
 Stop & Shop Foundation

Pauline A. Palmquist
 Sandra & Find C. C. Pedersen, Jr.
 Cindy R. & Beverly Pepin
 Paul & Shirley Perregaux
 William E. & Candace F. Powers
 John C. & Sharonlee E. Rakoczy
 Kenneth H. & Nancy T. Rawn
 Richard W. Redfield
 Ronald Rivard
 Michael A. & Jill Collier Robinson
 Hedy M. Rudne
 Dr. Edward S. & Jean A. Sawicki
 Alfred E. Schindler
 Ann K. Sedgwick
 James V. Sgro
 John A. & Nancy R. Silander
 William P. & Joan Simpson
 Roberta K. Smith
 Carl Acker & Linda Strausbaugh
 Sally T. Sumner
 Patricia Peters & Andrew Szych, Sr.
 John & Patricia Tanaka
 Mary E. Thatcher
 Patricia A. & Roger J. Thompson
 Martha McLaughlin Tonucci
 George B. & Lucile C. Towle
 William H. & Ingrid Treiss
 Allan F. & Marilyn K. Turner
 Jay & Susan Vining
 Valdis Vinkels
 Rudy F. & Gail L. Voit
 Dr. & Mrs. Edward P. Wandersee
 Elizabeth T. Wassmundt
 Kentwood D. & Marta M. Wells
 Theora J. Whetten
 William A. & Martha Wilson
 Raymond J. & Sarah W. Winter
 Felicia Pratto & Thomas A. Wood
 John E. Wraight, Jr.
 Richard & Judith Wright
 Samuel Zahl
 Irene Zalitis
 Garden Gate Club

\$50 - \$99

Anonymous
 Harry R. & Hazel Archambault
 Isabelle K. Atwood
 Robert & Sonja Balinskas
 Catherine & James G. Barnard
 Patricia & Richard Bazany
 Allan C. Bean
 Frederick A. & Mary W. Beardsley
 David A. Corsini & Delia Berlin
 Paul W. & Lesley R. Betts
 Mrs. Frank L. Bird
 Bertrand Bisson
 Charles T. & Rita A. Borovicka
 Bruce N. Gerber & Valarie Botta
 Michael J. & Patricia J. Cardin
 Fred A. Cazel, Jr.
 Peter K. & Dorothy O. Cheo
 Edward Werner Cook
 Margaret Costantino
 Jonathan M. Covault
 Jayne & John Cuffe
 Robert & Ellen Cushing
 Justine B. De Cruz
 Steven Rogers & Barbara Depray
 Arthur & Christine Dimock
 Sam & Anne Dodd
 Judith & James Donnelly
 Anthony Paticchio & Susan Eastwood
 Alice Eschholz
 Jerome & Diane Ethier
 Kenneth R. & Mary V. Feathers
 Mrs. Betty A. Feingold
 Dr. Philip & Shirley F. Fichandler
 Elmer & Dorothea Fischer
 John C. Folsom
 Raymond A. Gallagher
 Eidon L. & June B. Griffiths
 Cynthia F. Grinnell
 Hope Grunске
 Gwen E. Gustafson
 Claudia & Walter Gwardyak
 Gretchen O. & Roswell G. Hall, III
 Lawrence E. & Gayle R. Hightower
 Barbara A. Hill
 Martin A. Hirschorn
 Frederic W. & Jean K. Hopkins
 Irma Howbrigg
 Debra B. Hultgren
 Mudite & Arvids Indars
 Anne H. Isbister
 Alice B. Jansen
 Cynthia Jones
 Elizabeth P. Jordan
 Christian & Julia Joseph
 Dr. John C. Klemes
 Peter W. Ladd
 Dr. Peter F. Larsen
 Mary Dean Lindsay
 Robert W. & Kathleen Lisiewski
 Jean B. & William T. Lonergan, Jr.
 Shirley N. & Zenon S. Malinowski
 Julia Martens
 William L. & Loris M. Masterton
 John & Margaret McCarrick
 Judith A. Melichar
 R. Blair Murphy
 Mr. & Mrs. Charles Naumec
 Fred & Kathleen Otter

\$30,000 & MORE

John L. C. Lof
 Gladys Murphey

\$20,000 - 29,999

Sarah W. Richards

\$5,000 - \$19,999

Donna M. Young

\$1,000 - \$3,999

Janine N. Cairra
 Garry Clifford & Carol Davidge
 Martin S. DeSomma
 Nickolas A. & Roselee Fanelli
 Dorothy C. Goodwin
 Keith Wilson & Marjorie Hayes
 Kent E. Holsinger
 Robert Kamerschen
 Dennison J. Nash
 Dr. & Mrs. Francis Rice Trainor
 The Richard and Hinda Rosenthal Foundation

\$500 - \$999

Edward T. Allenby
 Raimon Beard
 Ellen J. Censky
 George A. Clark
 Alison Richard & Robert E. Dewar, Jr.
 G. Michael Howard
 Louise M. Lent
 Philip H. & Christine Lodewick
 Dr. Carl W. & Marian E. Rettenmeyer
 Antonio H. & Jean J. Romano
 James A. & Elizabeth A. Slater
 Margaret B. Taylor
 Robert F. Vieth
 David L. & Sylvia H. Wagner
 McGraw-Hill Companies
 UConn Alumni Association
 University of Connecticut League

\$250 - \$499

Gregory J. & Mona J. Anderson
 Angela & Nick Bellantoni

Michael D. & Margaret M. Curtis
 Janice Gudinkas
 Michael J. & Beth Ann Harney
 Collin Harty
 James D. & Gerry P. Harvey
 William J. Hopkins
 Mrs. Alfred J. Hunyadi
 Evelyn R. Savitzky
 Carl W. Schaefer
 David B. & Jill Schroeder
 Regina Tracy
 Bruce R. & Virginia M. Valentine
 Sandra Vlock

\$100 - \$249

Alphonse Avitabile
 Fritz Batchelor
 Mary Rogers Beckert
 John A. & Janice Benda
 Linda E. & Richard E. Bireley
 Harry & Honore Birkenruth
 Richard A. & Nancy Booth
 Raymond C. Bowen
 Carl & Carol B. Brolin
 William R. & Jean F. Bronson
 Marion P. Brown
 Suzana & Bruce Burchsted
 Karin Burns
 Tris J. & Angelee Diana Carta
 Nan R. & Douglas J. Cooper
 Jean Marie Crespi
 Lucy B. Crosbie
 Kenneth A. Doeg
 Chris Elphick
 J. Hart Evans
 Dr. John S. & Margaret Galle
 M. Regen Gant
 Mr. & Mrs. Harry S. Gaucher, Jr.
 Bonnie B. Gilbert
 Richard H. Goodwin
 Jeffrey Alan Granoff
 Karen Grava
 Robin Green
 Hank Gruner
 Evelyn A. Havir
 Heinz & Virginia H. Herrmann
 Anne L. & Richard P. Hiskes

Katherine K. & Hamilton Holt
 Joyce B. Humphrey
 Ann Hunyadi
 William A. Hyatt
 Richard & Gail Hyde
 Thomas M. Jankun, Jr.
 Linda K. Johnson
 John W. & Bettejane Karnes
 Leanne Kennedy
 Ruth R. Ladd
 Walter J. & Christine E. Lamb
 A. J. Lazuk
 Edward & G. A. Leadbetter
 Scott K. & Rebecca T. Lehmann
 Gerald M. & Anita Zoe Leibowitz
 Ralph Lewis
 Dr. Carl W. & Julia J. Lindquist
 Karen B. Lombard
 Sandra L. Tosi & Paul Maidment
 Louis Mameli
 David & Carolanne Markowitz
 Gregory & Vibha Jain Miller
 Marie Cantino & Peter Millman
 Marsha R. Morrison
 Jennifer Hockla & Donald Mysling
 Dick & Jane Pacelli
 Mary S. Palmer
 Dr. William & Marian Pohley
 Barbara Potterton
 Mark J. & Cheryl A. Roy
 Chandra Roychoudhuri
 James R. & Deborah S. Russel
 Marc & Nancy Schroeder
 Brian & Nancy Schwanda
 Victor E. & Jan Scottron
 Dr. Kenneth P. Sebens
 Leonard A. & Jane G. Seeber
 Roy & Dr. Jacquelyn Joseph-Silverstein
 Walter & Sabina Slavin
 Winthrop & Anne Smith
 Hilda Crosby Standish, M.D.
 Dr. Kenneth Dardick & Judith Stein
 Roxane B. Steinman
 Dr. Hugo F. Thomas
 Arlene Thompson
 Mary P. Thompson
 Lesa & Jeff Von Munkwitz-Smith

CORPORATE & FOUNDATION GRANTS

Anonymous, \$20,000
 Eastern Connecticut Community Foundation, \$500
 News-Times, \$1,000
 The Perkin Fund, \$10,000

MATCHING GIFTS

CIGNA Foundation Matching Gifts Program, \$25
 Northeast Utilities Foundation, Inc., \$100
 Phoenix Foundation, \$75
 Raytheon Charitable Gift Fund, \$25
 SBC Foundation, \$75
 The Hartford, \$65
 Unilever United States Foundation, Inc., \$35
 United Technologies (Hartford), \$130

GIFTS IN KIND

Basic Goods, Angela Bellantoni, Proprietor, office supplies
 Philip and Christine Lodewick, National Geographic BioBlitz screening reception; Ridgefield Lecture Series dinner
 William Morlock, Ridgefield Lecture Series dinner
 Walter and Sabine Slavin, Ridgefield Lecture Series dinner



University of Connecticut, Connecticut State Museum of Natural History

Unit 1023, Storrs, CT 06269-1023
www.mnh.uconn.edu
860•486•4460

